

# Door Hardware + Bath Accessories

Catalog



1~24	<b>Locks and Door Hardware</b>
1	Hinges
2	Mortise Locks
3 ~ 5	Commercial Locksets
6 ~ 7	Interconnected Locksets
8 ~ 9	Handlesets
10	Contemporary Series
11	Leverets
12	Knobsets & Deadbolts
13	Electronic Keypad Locks
14	Door Closers
15	Exit Devices
16	Electric Hardware
17	Thresholds & Weatherstrips
18 ~ 19	Commercial Door Hardware
20 ~ 23	Residential Door Hardware
24	Barn Door Hardware
25 ~ 36	<b>Bathroom Accessories</b>
25	Solano Collection
26	Vina Collection
27	Charleston Collection
28	Ventura Collection
29	Carmel Collection
30	Seal Beach Collection
31	Estes Collection
32	Campbell Collection
33	Corona Collection
34	Edison Collection
35 ~ 36	Hospitality Accessories
37 ~ 41	<b>Other Information</b>
37 ~ 39	Finish Charts
40	Architectural Hardware Consulting Services
41	About Pamex

COMMERCIAL HINGES

Plain Bearing



4.5" x 4.5", 4" x 4", 3.5" x 3.5", square corner

2 Ball Bearing



4.5" x 4.5", 4" x 4", square corner

Spring Hinge



4.5" x 4.5", 4" x 4", square corner

Continuous Geared Hinges



Full Mortise

- Full mortised, heavy-duty
- No door inset, flush mount
- 450 lbs. door weight maximum
- 48" door width maximum
- Material: Aluminum

Plain Bearing



4" x 4", 3.5" x 3.5, 1/4" radius round corner

2 Ball Bearing



4" x 4", 1/4" radius round corner

Spring Hinge



4" x 4", 1/4" radius round corner

Continuous Geared Hinges



Full Surface

- Full surface, heavy-duty
- 1/16" door inset
- For narrow-faced frames
- 450 lbs. door weight maximum
- 48" door width maximum
- Material: Aluminum

RESIDENTIAL HINGES

Plain Bearing



1/4" , 5/8"  
3.5" x 3.5" radius round corner

Plain Bearing



1/4" , 5/8"  
4" x 4" radius round corner

2 Ball Bearing



1/4" , 5/8"  
4" x 4" radius round corner

Spring Hinge



1/4" , 5/8"  
4" x 4" radius round corner



**MS SERIES**

ANSI A156.13, Grade 1  
Heavy-Duty Mortise Locks

Features:

- Fully reversible design
- No exposed mounting screws on outside and inside trims
- Can retrofit American Schlage L9000 Series mortise lock bodies
- Outside lever is clutch freewheeling design



Sectional Lever Trim



YT Lever



YM Lever



YH Lever



YR Lever

Escutcheon Plate Lever Trim



EYT Lever



EYM Lever



EYH Lever



EYR Lever



Mesa

- ANSI A156.2, Grade 1
- Heavy-duty cylindrical leverset
- Meets ADA requirements
- Push button locking
- I/C core lock available
- UL 3-hour fire-rated
- Clutch mechanism
- Electrification available



Pendleton

- ANSI A156.2, Grade 1
- Heavy-duty cylindrical leverset
- Meets ADA requirements
- Push button locking
- I/C core lock available
- UL 3-hour fire-rated
- Clutch mechanism
- Electrification available



Annapolis

- ANSI A156.2, Grade 1
- Heavy-duty cylindrical leverset
- Meets ADA requirements
- Push button locking
- I/C core lock available
- UL 3-hour fire-rated
- Clutch mechanism
- Electrification available



Alameda

- ANSI A156.2, Grade 1
- Heavy-duty cylindrical leverset
- Meets ADA requirements
- Push button locking
- I/C core lock available
- UL 3-hour fire-rated
- Clutch mechanism
- Electrification available



FDP Deadbolt

- ANSI A156.36, Grade 1
- Heavy-duty deadbolt
- Meets ADA requirements
- I/C core lock available
- UL 3-hour fire-rated





Hilo

- ANSI A156.2, Grade 2
- Heavy-duty cylindrical leverset
- Meets ADA requirements
- Push button locking
- I/C core lock available
- UL 3-hour fire-rated



Davidson

- ANSI A156.2, Grade 2
- Heavy-duty cylindrical leverset
- Meets ADA requirements
- Push button locking
- I/C core lock available
- UL 3-hour fire-rated



Princeton

- ANSI A156.2, Grade 2
- Heavy-duty cylindrical leverset
- Meets ADA requirements
- Push button locking
- I/C core lock available
- UL 3-hour fire-rated



Avalon

- ANSI A156.2, Grade 2
- Heavy-duty cylindrical leverset
- Meets ADA requirements
- Push button locking
- I/C core lock available
- UL 3-hour fire-rated





**Koda**

- ANSI A156.2, Grade 2
- Standard duty tubular leverset
- Meets ADA requirements
- Turn piece or push button locking
- I/C core lock available
- UL 3-hour fire-rated



**Dallas**

- ANSI A156.2, Grade 2
- Standard duty tubular leverset
- Meets ADA requirements
- Turn piece or push button locking
- I/C core lock available
- UL 3-hour fire-rated



**Cambridge**

- ANSI A156.2, Grade 2
- Standard duty tubular leverset
- Meets ADA requirements
- Turn piece or push button locking
- I/C core lock available
- UL 3-hour fire-rated



**FD7  
Deadbolt**

- ANSI A156.36, Grade 2
- Heavy-duty deadbolt
- Meets ADA requirements
- I/C core lock available
- UL 3-hour fire-rated



**Sierra**

- ANSI A156.2, Grade 2
- Standard duty tubular knobsets
- Quick release function
- Turn piece /push button locking
- I/C core lock available
- UL 3-hour fire-rated



**FD8 Deadbolt  
(Removable Cylinder)**



- ANSI A156.36, Grade 2
- Heavy-duty deadbolt
- Meets ADA requirements
- Adjustable latch standard (UL 3-hour fire-rated latch available)
- Removable cylinder
- Eliminates rekeying process by exchanging cylinders under one minute





- ANSI A156.12, Grade 2
- Tubular structure
- Meets ADA requirements
- I/C core deadbolt available
- Removable cylinder deadbolt available
- 3-hour fire-rated adjustable latch standard
- 4" & 5-1/2" center-to-center available



**Napa**  
(c-t-c: 5 1/2")



**Nova**  
(c-t-c: 4")



**Westfield**  
(c-t-c: 5 1/2")



**Concord**  
(c-t-c: 4")



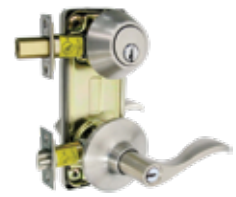
**Fremont**  
(c-t-c: 5 1/2")



**Daytona**  
(c-t-c: 4")



**Newport**  
(c-t-c: 5 1/2")



**Hampton**  
(c-t-c: 4")







Mirage  
(c-t-c: 5 1/2")



Toledo  
(c-t-c: 4")



Tacoma  
(c-t-c: 5 1/2")



Kenton  
(c-t-c: 4")



Ontario  
(c-t-c: 5 1/2")



Sterling  
(c-t-c: 4")





Introducing Pamex's sleek and stylish handleset collection! Elevate the look and security of your front door with our high-quality handlesets that seamlessly blend form and function. Choose from a variety of finishes and designs to complement your home's unique style.

Our handlesets are crafted with the finest materials and built to last, providing superior durability and performance. Upgrade your entryway with our handlesets and experience the perfect combination of beauty and security.

Troy



Tuscany



Catalina



Alhambra



Granada



Lexington



Victorian



Springfield

Interconnected Trim



- Naples lever
- Finishes: US15, 10B, 11P, 19
- Specify LH/RH



- Newberry lever
- Finishes: US15, 10B
- Specify LH/RH

Other Options Available



Experience the ultimate in modern security with our contemporary lockset collection! Designed with clean lines and minimalist aesthetics, our locksets are the perfect addition to any modern home. Choose from a variety of finishes and styles to perfectly match your home's decor. Our locksets are not only stylish but also easy to install and use, making them the perfect choice for the modern homeowner.



Mira



Kona



Tahoe



FDK Deadbolt



Onyx



FDS Deadbolt







Alto



Naples



Florence



Newberry



Denver



Viano



Milano



Savannah



Calypso



Olympic



KNOBSETS



Baron



Chester



Belle



Saturn

DEADBOLTS



Single Cylinder Deadbolt



Double Cylinder Deadbolt



One-sided Deadbolt with Cover



One-sided Deadbolt





# KAPTURE

## SMART HOME SECURITY DOOR LOCK



### Secure and Convenient

A smart lock designed with the homeowner in mind.

- Locks with a single tap
- Easy to install
- Assign unique access codes
- Control access times and code expiration
- Track access history
- Excellent for rentals
- Hidden mechanical key access



Home Link

## ELECTRONIC KEYPAD LOCKS



FKL Leverset

- Fits standard 2-1/8" door prep
- Easy installation, no wiring needed
- Reversible structure
- Easy programming
- Up to 100 user codes
- Customizable auto-relock time
- Illuminated keypad
- Back-up key cylinder override



FKD Deadbolt

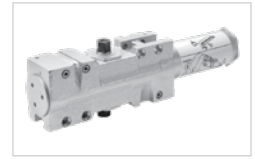
- Fits standard 2-1/8" door prep
- Easy installation, no wiring needed
- Automatic bolt direction determination
- Easy programming
- Up to 10 user codes
- Optional auto-locking function
- Illuminated keypad
- Back-up key cylinder override





**GC4400 Series**

- Full feature, heavy-duty cast-iron door closer
- Adjustable spring sizes 1 through 6
- ANSI A156.4, Grade 1, UL listed
- Tri-packed for regular, parallel, or top jamb installation
- Dual valve adjustable closing and latch speed
- Back-check function standard
- Barrier-free meets ADA compliance
- Full plastic cover standard
- Optional delayed action



**GC6800 Series**

- Slim-line design door closer
- Adjustable spring sizes 1 through 6
- ANSI A156.4, Grade 1, UL listed
- Tri-packed for regular, parallel, or top jamb installation
- Dual valve adjustable closing and latch speed
- Back-check function standard
- Barrier-free meets ADA compliance
- Full plastic cover standard
- Optional delayed action



**GC5900 Series**

- Full feature door closer
- Adjustable spring sizes 1 through 6
- ANSI A156.4, Grade 1, UL listed
- Tri-packed for regular, parallel, or top jamb installation
- Dual valve adjustable closing and latch speed
- Back-check function standard
- Barrier-free meets ADA compliance
- Full plastic cover standard
- Optional delayed action



**GC8700 Series**

- Multi-size and power adjustable door closer sizes 1 through 6, 1 through 4 and 3 through 6
- ANSI A156.4, Grade 1, UL listed
- Tri-packed for regular, parallel, or top jamb installation
- Dual valve adjustable closing and latch speed
- Back-check function standard
- Barrier-free meets ADA compliance
- Full plastic cover standard



**GC800 Series**

- Standard sized door closer, size 2, 3 and 4.
- ANSI A156.4, Grade 2, UL listed
- Tri-packed for regular, parallel, or top jamb installation
- Dual valve adjustable closing and latch speed (Not BHMA Certified)



E9000 / EF9000 Series



- ANSI A156.3, Grade 1
- Heavy duty exit devices
- Surface or concealed mount
- Vertical rod and rim type
- 3 hour fire-rated devices available



E9100 / EF9100 Series (Narrow Stile)



- ANSI A156.3, Grade 1
- Heavy duty exit devices
- Surface or concealed mount
- Vertical rod and rim type
- 3-hour fire-rated devices available



E9300 / EF9300 Series



- ANSI A156.3, Grade 1
- Heavy duty exit devices
- Surface mount
- Rim type
- 3-hour fire-rated devices available



E7000 / EF7000 Series



- ANSI A156.3, Grade 1
- Heavy duty exit devices
- Surface mount
- Vertical rod and rim type
- 3-hour fire-rated devices available



E5000 / EF5000 Series



- ANSI A156.3, Grade 1
- Heavy duty exit devices
- Surface mount
- Vertical rod and rim type
- 3-hour fire-rated devices available



E8000 / EF8000 Series



- ANSI A156.3, Grade 2
- Standard duty exit devices
- Surface mount
- Vertical rod and rim type
- 1½-hour fire-rated devices available



Mullion



- For use with rim exit devices on pairs of doors
- 11 gauge steel tube
- Panic-Rated and Fire-Rated
- Keyed Removable and Non-Keyed Removable
- Available in 84" and 96"

ELECTRIC STRIKES

100 Series



- Dual voltage 300/150 mA @ 12/24 VDC
- Fail-Secure, reversible for Fail-Safe operation
- For latch throw up to 5/8" with 1/8" door gap
- ANSI A156.31, Grade 2

200 Series



- Dual voltage 280/140 mA @ 12/24 VDC
- Fail-Secure, reversible for Fail-Safe operation
- For latch throw up to 3/4" with 1/8" door gap
- ANSI A156.31, Grade 2, UL Listed
- UL 10C, 3-hour fire-rated (fail-secure only)

400 Series



- 0.51 Amp @ 12 VDC or 0.25 Amp @ 24 VDC
- Fail-Secure, also available in Fail-Safe
- For latch throw up to 3/4" with 1/8" door gap
- ANSI A156.31, Grade 1
- UL 10C, 3-hour fire-rated (fail-secure only)
- UL 1034, burglary-resistant rated

MAGNETIC DOOR HOLDERS



Recess Mount



Surface Mount

- Dual voltage AC or DC inputs of 12/24V or 24/120V
- Low power consumption of 40mA
- Meets ANSI A156.15



POWER SUPPLY



EPS-1

- Input: 115VAC 60Hz, 0.6 Amp
- Output: filtered and electronically regulated 1 Amp @ 12/24VDC (field selectable)
- Battery Charger: 150mA @ 12VDC



EPS-2

- Input: 115VAC @ 800mA, 50/60 Hz, fused
- Output: filtered and electronically regulated 2 Amp @ 12/24VDC (field selectable)
- Battery Charger: 250mA @ 13.5 or 27VDC



POWER TRANSFER DEVICES



Power Transfer Hinge



Power Transfer Loop  
EPT-L2



Power Transfer Loop  
EPT-L3



Power Transfer  
EPT-L5



Power Transfer  
Heavy Duty Mortise  
EPT-M10





ADA Saddle Threshold



Smoke Seal



Door Bottom



Door Drip Cap



Weatherstrip W/ Bulb Seal



Commercial Door Sweep



Constant Flush Bolt  
(Metal Door)



Constant Flush Bolt  
(Wood Door)



Manual Flush Bolt  
(Metal Door)



Manual Flush Bolt  
(Wood Door)



Auto Flush Bolt  
(Metal Door)



Auto Flush Bolt  
(Wood Door)



Surface Overhead Stop



Concealed Overhead Stop



Latch Guard Protector  
(Universal)



Latch Guard Protector  
(for 3-3/4" rose)



Privacy Door Latch



Bumper Door Guard





Pull / Push Plate



Kick Plate



Armor Plate



Roller Bumper



Concave Wall Stop



Convex Wall Stop



Dome Stop - High Profile



Dome Stop - Low Profile



Goose Neck Floor Stop



Floor Stop



Cylindrical Floor Stop



Dust Proof Strike



160° Viewer



180° Viewer



UL 160° Viewer



UL 180° Viewer



4" Kocker with Viewer



5-1/2" Kocker with Viewer



6" Solid Brass Kocker



Solid Brass Kocker with Viewer



3-1/8" Cast Stop



3" Spring Stop



3-1/8" Spring Stop



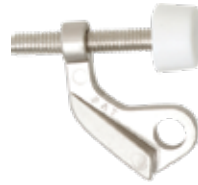
3" Rigid Stop



Heavy-Duty Hinge Pin Stop



Deluxe Hinge Pin Stop



Door Security Hinge Pin Stop



Adjustable Hinge Pin Stop



Residential Door Saver 2 Hinge Pin Stop



Residential Door Saver 3 Hinge Pin Stop



Bi-Fold Knob with Back Plate



Bi-Fold Knob Only



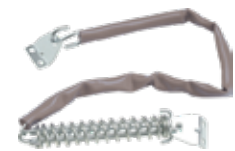
Finger Pull



HD Handrail Bracket



Jumbo Handrail Bracket



Spring Crash Chain



7" Flush Bolt



16" Extended Bolt



7" Single Route Flush Bolt



6" Flush Bolt



3", 4" & 6" Surface Bolt



Mag Katch Top & Bottom



Mag Katch



Magnet



Sliding Door Lock



Adj. Ball Catch



Roller Catch



Heavy-Duty Roller Catch



Sliding Door Lock



Metal Pole Socket



4" Kick Down Door Holder



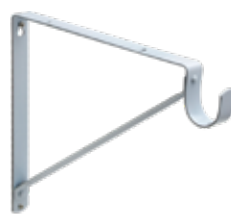
5" Kick Down Door Holder



Shelf & Rod Support Bracket (Single Leaf)



Shelf & Rod Support Bracket (Heavy Duty Adj.)



Shelf & Rod Support Bracket (Heavy Duty Fixed)



Shelf & Rod Support Bracket (Heavy Duty Fixed - No Hook)



House Number



House Letter



Heavy-Duty House Number



Heavy-Duty House Letter



Pamex 1000 Series Classic Style Barn Door Hardware fits perfectly with industrial style homes. The best way to separate rooms without taking up too much space.

1000 Series



Surface Mount Bent Strap Wheel

2000 Series



Surface Mount Strap Wheel



Top Mount Single Wheel



Top Mount Single Wheel



Soft Closing Kit for Flat Track



Adjustable Floor Roller Guide



Handle with Flush Pull



Recessed Flush Pull

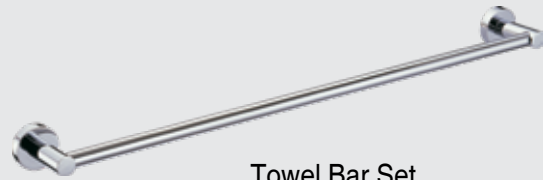


Hand Pull





Elevate the look and functionality of your bathroom with our exquisite accessories that seamlessly blend modern design and top-of-the-line performance.



Towel Bar Set



Single Robe Hook



Double Towel Bar Set



European-style Paper Holder



Paper Holder



Pivot Paper Holder



Straight Post Paper Holder



Towel Ring



Circle Towel Ring



Add a touch of elegance to your bathroom with our beautifully crafted accessories. Our Vina collection features a wide range of high-quality accessories, from towel bars to robe hooks, all designed with both form and function in mind.



Towel Bar Set



Single Robe Hook



Double Towel Bar Set



European-style Paper Holder



Paper Holder



Pivot Paper Holder



Straight Post Paper Holder



Towel Ring



Circle Towel Ring



The sleek design and round base of the Charleston Collection brings an air of sophistication to any home.



Towel Bar Set



Double Robe Hook



Paper Holder



Towel Ring



European-style Paper Holder



The double waterfall sculptured edge gives the Ventura Collection a transitional styling advantage. Functional craftsmanship and lines are reflected in this fine collection.



Towel Bar Set



Double Robe Hook



Paper Holder



Towel Ring



European-style Paper Holder



Toothbrush / Tumbler Holder



Soap Dish



Traditional and contemporary décor schemes can be easily achieved by the Carmel Collection's simple and practical appearance.



Towel Bar Set



Double Robe Hook



Paper Holder



Towel Ring



European-style Paper Holder



Toothbrush / Tumbler Holder



Soap Dish



The smooth post and circular base of the Seal Beach Collection offers a perfect balance of beauty and practicality.



Towel Bar Set



Single Robe Hook



Paper Holder



Towel Ring



European-style Paper Holder



Toothbrush / Tumbler Holder



Soap Dish



The Estes Collection's timeless and classic design adds a soft yet sophisticated look to your bathroom while enhancing any decor.



Towel Bar Set



Double Robe Hook



Paper Holder



Towel Ring



European-style Paper Holder





Simple styling and quality expresses the look of Campbell. Its square base design and attention to detail complements any styling scheme.



Towel Bar Set



Double Robe Hook



Paper Holder  
(Chrome Roller)



Towel Ring



Paper Holder  
(White Roller)



Toothbrush / Tumbler Holder



Soap Dish





Slightly radiused corners make Corona a collection that radiates warmth and beauty.



Towel Bar Set



Double Robe Hook



Paper Holder  
(Chrome Roller)



Towel Ring



Paper Holder  
(White Roller)



Toothbrush / Tumbler Holder



Soap Dish



Easy installation with exposed screws makes Edison the best solution for economical projects.



Towel Bar Set



Double Robe Hook



Towel Ring



Paper Holder



Toothbrush / Tumbler Holder



Soap Dish



Contemporary Stainless Steel Grab Bar



Stainless Steel Grab Bar  
(Concealed Screws)



Stainless Steel Grab Bar  
(Peened Finish)



Stainless Steel Grab Bar  
(Exposed Screws)



Swing Up Grab Bar  
(Peened Finish)



Straight Shower Rod



ABS Plastic Adjustable  
Flange Set



Zinc Adjustable  
Flange Set



Zinc Exposed  
Screw Flange Set



Curved Shower Rod



Spacious Shower Rod  
(Concealed or Exposed Screw Flanges)



Towel Shelf with Bar



Recessed Tissue Dispenser



Retractable Clothes Line



Recessed Extra Paper Holder



Twin Recessed Paper Holder



Surface Mount Twin Paper Holder



Deep Recessed Paper Holder



Shallow Recessed Paper Holder



Deep Recessed Soap Holder & Grab



Shallow Recessed Soap Holder & Grab



US CODE	3	5	10B	11P	15	15A	19	26	26D	32D	L03
<b>BHMA</b>	<b>605</b>	<b>609</b>	<b>613</b>		<b>619</b>	<b>620</b>	<b>622</b>	<b>625</b>	<b>626</b>	<b>630</b>	<b>505</b>
<b>HANDLESETS</b>											
Alhambra				•	•						•
Catalina	•		•		•	•					
Granada				•	•						•
Lexington	•	•	•	•	•	•	•	•			•
Springfield	•	•			•						
Troy			•	•	•		•	•			
Tuscany			•	•	•						
Victorian	•				•						
<b>LEVERSETS</b>											
Alto					•		•	•			
Calypso	•	•			•		•	•	•		
Denver	•		•		•						
Florence	•	•			•						
Milano	•	•		•	•		•				
Mira					•		•	•			
Naples	•		•	•	•	•	•	•			
Newberry	•		•		•	•					
Olympic	•	•			•		•	•	•		
Onyx					•		•	•			
Savannah	•	•			•						
Tahoe					•		•	•			
Viano	•		•		•	•	•				
<b>KNOBSETS</b>											
Baron	•	•	•	•	•	•	•			•	
Belle	•	•								•	
Chester	•		•	•	•						
Kona					•		•	•			
Saturn	•	•	•		•	•	•	•		•	
<b>DEADBOLTS</b>											
FD2	•	•	•	•	•	•	•	•	•	•	
FD3	•	•	•	•	•	•	•	•		•	
FDK/FDS					•		•	•			
Kapture					•		•				
KPD/KPL					•		•				

\* WARNING: Cancer and Reproductive Harm - www.P65warnings.ca.gov - See page 39 to learn more about California Proposition 65

US CODE	3	5	10B	11P	15	15A	19	26	26D	32D
<b>BHMA</b>	<b>605</b>	<b>609</b>	<b>613</b>		<b>619</b>	<b>620</b>	<b>622</b>	<b>625</b>	<b>626</b>	<b>630</b>
<b>COMMERCIAL LOCKS</b>										
Alameda			•		•				•	
Annapolis			•		•		•		•	
Avalon					•		•		•	
Cambridge	•	•	•		•		•		•	
Concord / Westfield			•		•		•		•	
Dallas			•		•				•	
Daytona / Fremont			•		•				•	
Davidson			•		•				•	
Hilo					•		•		•	
Kenton / Tacoma					•		•	•		
Koda					•		•		•	
Mesa					•		•		•	
Newport / Hampton			•		•					
Nova/Napa					•		•		•	
Pendleton			•		•				•	
Princeton	•	•	•		•		•		•	
Sierra	•	•								•
Sterling / Ontario					•		•	•		
Toledo / Mirage					•		•	•		
FDP Deadbolt			•		•		•		•	
FD7 Deadbolt	•	•	•		•		•		•	•
FD8 Deadbolt			•		•		•		•	•

\* WARNING: Cancer and Reproductive Harm - www.P65warnings.ca.gov - See page 39 to learn more about California Proposition 65



US11P  
Venetian Bronze



US12P  
713  
Dark Bronze



US19  
631  
Matte Black



US26  
625  
Chrome



US3  
605  
Polished Brass



US15  
619  
Satin Nickel

US CODE	26	3	15	12P	11P	19	15A
BHMA	625	605	619	716		622	620
	Chrome	Polished Brass	Satin Nickel	Dark Bronze	Venetian Bronze	Matte Black	Antique Nickel
Solano / Vina	•		•			•	
Eureka / La Quinta	•	•	•				
Charleston	•		•		•	•	
Ventura	•	•	•	•	•	•	•
Carmel	•	•	•	•		•	
Seal Beach	•	•	•	•		•	
Estes	•		•	•		•	
Campbell	•	•					
Corona	•	•	•	•		•	
Edison	•						

## CALIFORNIA PROPOSITION 65 OVERVIEW

### What is Proposition 65?

Proposition 65 requires businesses to provide warnings to Californians about significant exposures to chemicals that cause cancer, birth defects or other reproductive harm. This enables Californians to make informed decisions about their exposures to these chemicals.

Proposition 65 requires California to publish a list of chemicals known to cause cancer, birth defects or other reproductive harm. This list, which must be updated at least once a year, has grown to include approximately 900 chemicals since it was first published in 1987.

### What does the warning look like?

WARNING: Cancer and Reproductive Harm - [www.P65warnings.ca.gov](http://www.P65warnings.ca.gov)

### What does a warning mean?

The product package associated with the warning could expose individuals to one or more of the chemicals on the list.

### How do I learn more about Proposition 65?

Visit this website to learn more about Proposition 65.  
<https://www.p65warnings.ca.gov/>

### Where do I find answers related to businesses?

[https://www.p65warnings.ca.gov/sites/default/files/art\\_6\\_business\\_qa.pdf](https://www.p65warnings.ca.gov/sites/default/files/art_6_business_qa.pdf)



## COMPREHENSIVE ARCHITECTURAL HARDWARE CONSULTING SERVICES

**PAMEX has experienced** architectural hardware experts on staff to provide the architectural and design community with comprehensive consulting services surrounding architectural hardware, doors and frames specifications.

**We understand** the importance of meeting time-sensitive deadlines and strict budget requirements. When you use Pamex's complimentary specification writing service, you will achieve both.

**Pamex saves you time** by operating your door hardware specifications on your behalf at no cost. We review the plans and help you spot and fix conflicts between the door schedule and floor plans.

**Our goal** is to help you by taking the stress and worry out of creating the hardware schedule during the design phase of your project by providing you with the following complimentary services:

- Developing detailed, architectural hardware specifications and schedules
- Meeting with your design professional and/or owner / architect to discuss project requirements and coordinate security and access control.
- Consulting on the applicable building codes to ensure fire, life-safety, and accessibility requirements are met
- Assisting with the development of keying schedules
- Provide product catalog cuts, electrical elevations, and riser diagrams
- Review of substitution requests, product applications, and product questions
- Review and comment on hardware submittals
- Conduct jobsite reviews, pre-installation meetings and post-installation inspections
- Conduct fire door inspections (FDAI-certified)

**We believe** that by offering you these complimentary, value-added services, along with our premium quality and cost-effective products, you'll see for yourself how Pamex really does give you more.

### Specifications:

- Section 08 71 10 Door Hardware
- Section 08 74 00 Access Control Hardware
- Section 08 71 53 Security Door Hardware
- Section 10 28 00 Toilet, Bath, and Laundry
- Section 28 00 00 Electronic Safety and Security



TOTAL OPENINGS APPLICATION DEVELOPERS

COMSENSE





## ABOUT PAMEX

Established in 1985, Pamex is a leading manufacturer and distributor of builders' hardware. Quality products and outstanding customer service are the hallmarks of Pamex. Our major product lines include commercial and residential door locksets, door closers, exit devices, hinges, bath accessories, miscellaneous door hardware, and access control system.

We offer high quality and durable products at significant value to all our customers. Our two distribution centers in Chino, California and Concord, North Carolina inventory products in substantial volume to ensure that we can complete any multi-family, single-family, or commercial projects.

Our services include specification writing, submittal reviews, fire and accessibility code expertise, and keying schedule. We also provide in-house keying services, order entry, and shipping management. Our dedicated customer service team ensures that we provide the best service all along the way.

## MISSION

To provide extraordinary service and supply quality products to meet customer needs and exceed their expectations  
 To continuously improve upon our services and products by embracing innovation and new challenges

## WHY PAMEX?

Here are seven main reasons to choose Pamex as your hardware solution:

- |                         |   |
|-------------------------|---|
| <b>1 SERVICE</b>        | Our unparalleled level of customer service ensures you our full support every step of the way.  |
| <b>2 CONVENIENCE</b>    | We are a one-stop shop for hardware products and services, including in-house rekeying and creation of keying schedules, specifications writing, codes and compliance consultation, and substitution request. |
| <b>3 RESPONSIVENESS</b> | We process and ship your orders smoothly and quickly.   |
| <b>4 KNOWLEDGE</b>      | We have a wealth of expertise on codes, products, and the industry.   |
| <b>5 QUALITY</b>        | Our high quality and durable products offer the best of security with warranty to back up our promise.  |
| <b>6 COST</b>           | We keep your project in budget with durable, cost-effective hardware solutions and easy upgrades.   |
| <b>7 INTEGRITY</b>      | We hold ourselves to the highest standard in every way.   |

**Headquarters**  
4680 Vinita Ct.  
Chino, CA 91710

**Distribution Center**  
8400 Westmoreland Dr. NW  
Concord, NC 28027

**Phone**  
(909) 606-4168  
(800) 621-6869

**Fax**  
(909) 606-4358  
(800) 838-8307

**Email + Website**  
sales@pamexinc.com  
pamexinc.com



**Minority Business Enterprise Certified Company**  
Certificate #4269